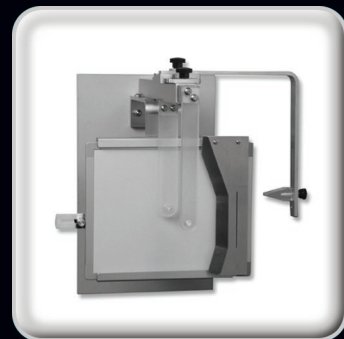


Ceph Attachments



Soft Tissue Shield

Model 76-2100-036

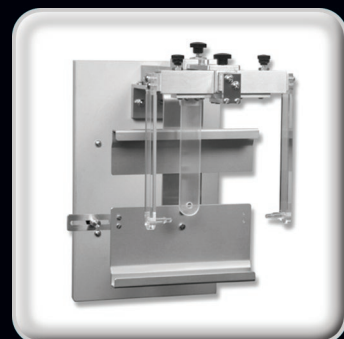
The soft tissue profile of the lateral skull view is the most important of all radiolucent images seen in cephalometric radiographs. The shield can be adjusted to the patient's profile.



Box Type Collimator/Fixator

Model 76-CX6577

This unit can be utilized with all x-ray units. The x-ray cone is inserted into the collimating box, then locked in a fixed position.



Frontal Head Positioner (AP HOLDER)

Model 76-2110

The frontal head positioner provides accurate alignment for the anterior-posterior view of the skull.

For more information about these attachments, visit our website at www.margraf dental.com/ceph-attachments.html

Additional Products



Shielded PID (Position Indicating Device)

Margraf Dental provides a comprehensive range of Shielded PIDs available for most makes and models of dental x-ray equipment. We offer both rectangular and round shielded PIDs that re-

duce secondary or scatter radiation thereby increasing the contrast and definition and enhancing the diagnostic quality of the x-ray. An additional benefit of our shielded PIDs is a reduction in the area of the patient's tissue that is exposed to radiation.



The Traveler Ceph/X-Ray Pump Stool

Model 98-908B

The stool that travels where you need it most - vertically. It features smooth and infinitely positionable pump-action seat adjustment with

single foot lever control. The seat swivels 360 degrees and height is adjustable from 20 to 28 inches. It includes deluxe molded foam seat cushion with upholstered back rest. The 5 leg cast aluminum 22" diameter base provides maximum stability.

Margraf Dental has been manufacturing quality products since 1967. For more information on our products, visit our website at www.margraf dental.com.

CX 2100

A versatile **cephalometric** solution compatible with digital or analog periapical x-ray systems for consistently accurate radiographs.



Margraf Dental Manufacturing Inc.

Toll Free: 1-800-762-2641

P.O. Box 2004 • 611 Harper Avenue • Jenkintown, PA 19046

www.margraf dental.com • contact@margraf dental.com



Fixator / Box-Type Collimator

The Fixator/Collimator provides stability and alignment for the x-ray head and collimates (limits) the x-ray field to the size of the 8 x 10 image receptor (cassette). The unit accepts any x-ray PID (cone), or one is provided with the collimator.

Fixator Bracket and Collimator Removed

The Fixator/Collimator can easily be disengaged from the wall plate and reinstalled quickly and simply.

Patient Head Positioner/ Cassette Holder

The CX2100 Patient Head Positioner allows no movement of the patient ear posts once locked in position, thus stabilizing the patient in a fixed position. The nasion positioner is necessary to stabilize the patient for the Frankfort Horizontal Plane. Patient-to-film distance is at a minimum so you obtain maximum image sharpness.

CX2100 Cephalostat Removed

As you can see, this offers great flexibility for your office, with nothing protruding out into the operatory space. There is only one locking knob, which simplifies the disengaging and reinstallation of the unit.

*X-ray machine not
included.*

*Designed to be used
with your existing
x-ray machine.*

Additional Features

- The CX2100 can be quickly disengaged from the wall plate (on-off) capabilities for both the "Cephalostat" and "Fixator/Collimator", which maximizes the flexibility of location in the operatory, especially where an operatory serves as a dual function or where space is of primary concern.
- The CX2100 is utilized for lateral views along with capabilities for anterior (AP) views and submental vertex (SMV) radiographs for analyzing condyle angulation.
- The unit is easily "factory" customized, giving flexibility of installation in various office designs. The CX2100 can easily be changed from a STANDARD setup to a REVERSE setup direction.
- The unit has a film "cassette stop" which is utilized in maximizing "film placement to patient head" positioning. This is absolutely necessary due to Radiation Safety requirements for x-ray field size and alignment. By having a "cassette stop," the placement of the film cassette is positioned to eliminate cone cutting, yet permitting the maximum patient head coverage.
- The "Fixator/Box-Type Collimator" can be utilized with all x-ray units by inserting the x-ray PID (cone) into the Collimator. The Fixator/ Collimator also has vertical and horizontal adjustments.
- Positive alignment indicators are present in each radiograph to assure consistent and accurate radiographs.
- A package that includes a "Soft Tissue Shield" for soft tissue profile and an 8 x 10 cassette for film or digital scan is also available.

Find out more, visit us at...
www.margraf dental.com/cx-2100.html



MARGRAF
DENTAL • MFG • INC